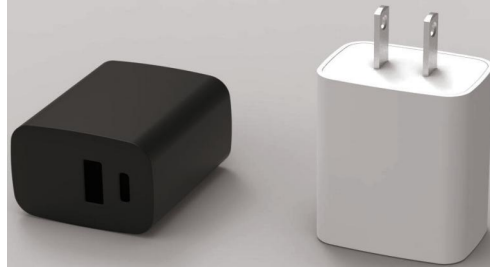


GAN FAST CHARGE

氮化镓快速充电器

PD45 series 系列

结构及外形尺寸 Dimensions of structure and shape



| Part Number 型号 | Input Rating 输入额定值 | Output mode 输出方式 | O.P.V 输出电压 | O.P, C 输出电流 | Tderanc e 输出公差 | No load power consumption | AC plug AC插脚 | Power 功率 |
|-----------------|--------------------|------------------|------------|-------------|----------------|---------------------------|-------------------|----------|
| GxzzCvvvvaaaaWA | 100~240V50/60Hz | 单C口 | 5.0VDC | 3.00A | ±5% | ≤0.1W | CCC/UL/PSE/UK/BIS | 45W max |
| | | | 9.0VDC | 3.00A | | | | |
| | | | 12.0VDC | 2.25A | | | | |
| | | | 15.0VDC | 2.00A | | | | |
| GxzzCvvvvaaaaWA | 100~240V50/60Hz | 单A口 | 20.0VDC | 1.50A | ±5% | ≤0.1W | CCC/UL/PSE/UK/BIS | 45W max |
| | | | 5.0VDC | 2.40A | | | | |
| | | | 5.0VDC | 3.00A | | | | |
| | | | 9.0VDC | 3.00A | | | | |
| GxzzCvvvvaaaaWA | 100~240V50/60Hz | 单C口/单A口 | 12.0VDC | 3.00A/2.25A | ±5% | ≤0.1W | CCC/UL/PSE/UK/BIS | 45W max |
| | | | 15.0VDC | 2.70A | | | | |
| | | | 20.0VDC | 2.25A/1.35A | | | | |
| | | | 5.0VDC | 1.00A | | | | |

以上C口/PPS: 3.3-11.0V 3.0A/3.3-16.0V 2.0A (30W max)

特性 Features/应用 Applications

国际通用交流范围输入

World wide AC Input

小体积, 轻巧便携

Light&Compact design Many kinds of protection

多种保护功能

Many kinds of protection

平均故障间隔时间10000小时

10,000 hours of Mean time between failures tim

适用于小家电类、医疗类,音频,视频或信息技术类,消费类等

Applicable to small household appliances, medical, audio, video or information technology, consumer, etc

符合能源之星六级

Energy Efficiency complied with DoE VI level

兼容快充协议: APPLE2.4A/QC2.0/QC3.0/AFC/FCP/PD3.0/PPS/BC1.21 等

Compatible with fast charger protocol (PowerDeliverySpecification): APPLE2.4A/QC2.0/QC3.0/AFC/FCP/PD3.0/PPS/BC1.21 etc.

参数 Specification

| | | |
|---------------------------|---------|---|
| Input Voltage | 输入电压 | 100-240V 50/60Hz 1.2A Max |
| Inrush Current | 浪涌电流 | less than 60A, 240Vac, 25°C |
| Leakage Current | 泄漏电流 | less than 0.25mA, at 264Vac |
| Efficiency | 效率 | 85.0%, Min |
| O.P.V | 输出电压 | 3.0 - 20VDC |
| O.P.C | 输出电流 | 0.01~3.00A |
| No Load Power Consumption | 待机功耗 | ≤0.1W, 115/230VAC |
| Ripple & Noise(max) | 纹波与噪声 | ≤1% |
| Short Circuit Protection | 短路保护 | Short at DC and no damage |
| Work Temp. & Humidity | 工作温湿度范围 | 0°C ~ 40°C, 5%~90% RH Non-Condensing(无凝露) |
| Storage Temp.&Humidity | 库存温湿度范围 | -20°C ~ 85°C 5%~90% RH Non-Condensing(无凝露) |
| Altitude | 海拔高度 | Less than 2000m. |
| Withstand Voltage | 绝缘耐压 | AC 3000V, 1 minute, 10mA Max. |
| Insulation Resistance | 绝缘阻抗 | Input to Output: ≥50MΩ, at 500Vdc |
| Safety Standards | 安规标准 | CCC,UL/CUL,PSE,GS,KO,SAA,BS,ETL....ect |
| EMC | 电磁兼容标准 | EMI: IEC/EN55032B, IEC/EN 55014, GB9254, FCC, EMS: IEC61000-4-2, IEC61000-4-3, IEC61000-4-4, IEC61000-4-5, IEC61000-4-6, IEC61000-4-11, etc. |

★ 产品可以按客户要求定制

Products can be customized according to customer requirements