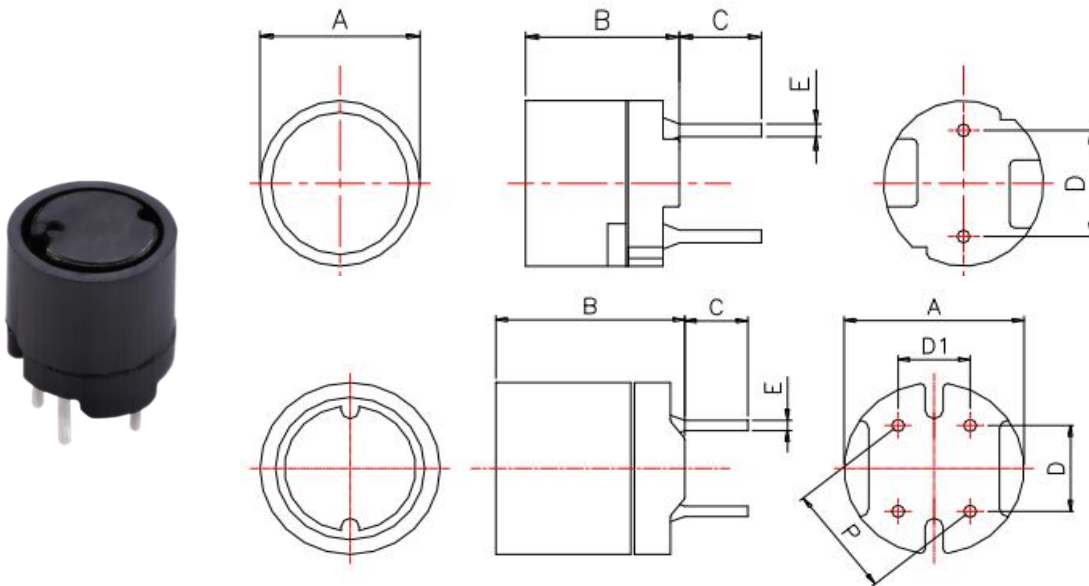


■ SMD Wire Wound Chip Inductor

结构及外形尺寸 Dimensions of structure and shape



Part Number	Dimensions	Dimensions	Dimensions	Dimensions	Dimensions	Dimensions	Dimensions
	A (mm)	B(mm)	C(mm)	D(mm)	D1(mm)	E(mm)	P(mm)
GCPB0664N	6.0±0.5	6.50 max	4.0±1.0	4.0±0.3	-	0.50±0.1	-
GCPB0875N	7.8±0.5	7.50 max	5.0±1.0	5.0±0.3	-	0.65±0.1	-
GCPB1010N	10.0±0.5	10.5±0.5	3.5±1.0	5.0±0.3	4.0±0.3	0.80±0.1	6.40±0.5

特点 Features

- 磁屏蔽及插件结构
- Magnetically shielded & DIP type
- 相对较大的额定电流和高电感
- Comparatively range rated current and high inductance
- 低辐射干扰和高稳定性的插件结构
- Low radiation and high dip stability

应用 Applications

- 个人电脑
- Personal Computers
- 电池动力设备
- Variety of Battery Power Equipment
- 直流电源电路
- DC Power Supply Circuits

电感特性范围 Inductance and rated current ranges

GCPB0664N	22~1000uH	130~5560mΩ	0.96~0.14A
GCPB0875N	22~10000uH	80~35000mΩ	1.60~0.074A
GCPB1010N	10~1000uH	23~1500mΩ	3.51~0.35A

包装数量 Packaging Quantity

GCPB0664N	200PCS/BOX
GCPB0875N	200PCS/BOX
GCPB1010N	144PCS/BOX

★ 产品可以按客户要求定制

Products can be customized according to customer requirements

本产品符合车载信赖性标准AEC-Q200

This product Complied with automotive reliability test standard AEC-Q200



GCPB Series (UNSHIELDED)

ELECTRICAL SPECIFICATION

GCPB0664N Series (Quantity: 200PCS)/GCPB0664N 系列 (数量: 200PCS)

Part Number	Marking	Inductance (μ H)	DCR (Ω) max.	Test Freq. (Hz)	Saturation Current(A)
GCPB0664N-220M01	-	22	0.13	100KHz/0.1v	0.96
GCPB0664N-270M01	-	27	0.18	100KHz/0.1v	0.87
GCPB0664N-330M01	-	33	0.21	100KHz/0.1v	0.78
GCPB0664N-390M01	-	39	0.26	100KHz/0.1v	0.72
GCPB0664N-470M01	-	47	0.29	100KHz/0.1v	0.66
GCPB0664N-560M01	-	56	0.33	100KHz/0.1v	0.60
GCPB0664N-680M01	-	68	0.36	100KHz/0.1v	0.55
GCPB0664N-820M01	-	82	0.39	100KHz/0.1v	0.50
GCPB0664N-101M01	-	100	0.54	1KHz/0.1v	0.45
GCPB0664N-121M01	-	120	0.62	1KHz/0.1v	0.41
GCPB0664N-151M01	-	150	0.72	1KHz/0.1v	0.37
GCPB0664N-181M01	-	180	0.88	1KHz/0.1v	0.34
GCPB0664N-221M01	-	220	0.99	1KHz/0.1v	0.30
GCPB0664N-271M01	-	270	1.52	1KHz/0.1v	0.27
GCPB0664N-331M01	-	330	1.69	1KHz/0.1v	0.25
GCPB0664N-391M01	-	390	1.85	1KHz/0.1v	0.23
GCPB0664N-471M01	-	470	2.85	1KHz/0.1v	0.21
GCPB0664N-561M01	-	560	3.21	1KHz/0.1v	0.19
GCPB0664N-681M01	-	680	3.60	1KHz/0.1v	0.17
GCPB0664N-821M01	-	820	4.87	1KHz/0.1v	0.16
GCPB0664N-102M01	-	1000	5.56	1KHz/0.1v	0.14



GCPB Series (UNSHIELDED)

ELECTRICAL SPECIFICATION

GCPB0875N Series (Quantity: 200PCS)/GCPB0875N 系列 (数量: 200PCS)					
Part Number	Marking	Inductance (μ H)	DCR (Ω) max.	Test Freq. (Hz)	Saturation Current(A)
GCPB0875N-220M01	-	22	0.08	100KHz/0.1v	1.600
GCPB0875N-270M01	-	27	0.10	100KHz/0.1v	1.400
GCPB0875N-330M01	-	33	0.14	100KHz/0.1v	1.300
GCPB0875N-390M01	-	39	0.15	100KHz/0.1v	1.200
GCPB0875N-470M01	-	47	0.17	100KHz/0.1v	1.100
GCPB0875N-560M01	-	56	0.19	100KHz/0.1v	0.990
GCPB0875N-680M01	-	68	0.21	100KHz/0.1v	0.890
GCPB0875N-820M01	-	82	0.27	100KHz/0.1v	0.810
GCPB0875N-101M01	-	100	0.32	1KHz/0.1v	0.740
GCPB0875N-121M01	-	120	0.36	1KHz/0.1v	0.670
GCPB0875N-151M01	-	150	0.51	1KHz/0.1v	0.600
GCPB0875N-181M01	-	180	0.57	1KHz/0.1v	0.550
GCPB0875N-221M01	-	220	0.76	1KHz/0.1v	0.500
GCPB0875N-271M01	-	270	0.86	1KHz/0.1v	0.450
GCPB0875N-331M01	-	330	0.97	1KHz/0.1v	0.410
GCPB0875N-391M01	-	390	1.28	1KHz/0.1v	0.370
GCPB0875N-471M01	-	470	1.44	1KHz/0.1v	0.340
GCPB0875N-561M01	-	560	1.61	1KHz/0.1v	0.310
GCPB0875N-681M01	-	680	2.07	1KHz/0.1v	0.280
GCPB0875N-821M01	-	820	2.33	1KHz/0.1v	0.260
GCPB0875N-102M01	-	1000	2.72	1KHz/0.1v	0.230
GCPB0875N-122M01	-	1200	3.98	1KHz/0.1v	0.210
GCPB0875N-152M01	-	1500	4.50	1KHz/0.1v	0.190
GCPB0875N-182M01	-	1800	6.81	1KHz/0.1v	0.170
GCPB0875N-222M01	-	2200	7.56	1KHz/0.1v	0.160
GCPB0875N-272M01	-	2700	8.54	1KHz/0.1v	0.140
GCPB0875N-332M01	-	3300	9.74	1KHz/0.1v	0.130
GCPB0875N-392M01	-	3900	12.90	1KHz/0.1v	0.120
GCPB0875N-472M01	-	4700	14.70	1KHz/0.1v	0.110
GCPB0875N-562M01	-	5600	20.40	1KHz/0.1v	0.099
GCPB0875N-682M01	-	6800	23.00	1KHz/0.1v	0.089
GCPB0875N-822M01	-	8200	30.60	1KHz/0.1v	0.081
GCPB0875N-103M01	-	10000	35.00	1KHz/0.1v	0.074



GCPB Series (UNSHIELDED)

ELECTRICAL SPECIFICATION

GCPB1010N Series (Quantity: 144PCS)/GCPB1010N 系列 (数量: 144PCS)

Part Number	Marking	Inductance (μ H)	DCR (Ω) max.	Test Freq. (Hz)	Saturation Current(A)
GCPB1010N-100M01	-	10	0.023	100KHz/0.1v	3.510
GCPB1010N-120M01	-	12	0.024	100KHz/0.1v	3.240
GCPB1010N-150M01	-	15	0.036	100KHz/0.1v	2.880
GCPB1010N-180M01	-	18	0.039	100KHz/0.1v	2.610
GCPB1010N-220M01	-	22	0.042	100KHz/0.1v	2.340
GCPB1010N-270M01	-	27	0.045	100KHz/0.1v	2.160
GCPB1010N-330M01	-	33	0.057	100KHz/0.1v	1.890
GCPB1010N-390M01	-	39	0.076	100KHz/0.1v	1.800
GCPB1010N-470M01	-	47	0.100	100KHz/0.1v	1.620
GCPB1010N-560M01	-	56	0.110	100KHz/0.1v	1.440
GCPB1010N-680M01	-	68	0.150	100KHz/0.1v	1.350
GCPB1010N-820M01	-	82	0.160	100KHz/0.1v	1.260
GCPB1010N-101M01	-	100	0.190	1KHz/0.1v	1.080
GCPB1010N-121M01	-	120	0.210	1KHz/0.1v	0.990
GCPB1010N-151M01	-	150	0.230	1KHz/0.1v	0.900
GCPB1010N-181M01	-	180	0.260	1KHz/0.1v	0.820
GCPB1010N-221M01	-	220	0.290	1KHz/0.1v	0.740
GCPB1010N-271M01	-	270	0.360	1KHz/0.1v	0.670
GCPB1010N-331M01	-	330	0.510	1KHz/0.1v	0.610
GCPB1010N-391M01	-	390	0.690	1KHz/0.1v	0.550
GCPB1010N-471M01	-	470	0.980	1KHz/0.1v	0.510
GCPB1010N-561M01	-	560	1.100	1KHz/0.1v	0.460
GCPB1010N-681M01	-	680	1.200	1KHz/0.1v	0.420
GCPB1010N-821M01	-	820	1.300	1KHz/0.1v	0.380
GCPB1010N-102M01	-	1000	1.500	1KHz/0.1v	0.350