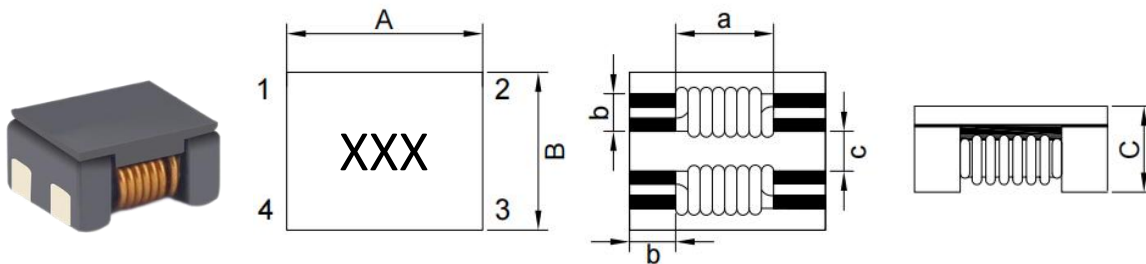


## ■ SMD Common Mode Inductance

结构及外形尺寸 Dimensions of structure and shape



Part Number	Dimensions	Dimensions	Dimensions	Land Patterns		
	长 A (mm)	宽 B(mm)	高 C(mm)	推荐焊盘尺寸		
	A (mm)	B(mm)	C(mm)	a(mm)	b(mm)	c(mm)
GCCM4520N	4.70±0.50	4.50±0.50	2.00 max	2.70	1.00	1.25
GCCM7060N	7.00±0.50	6.00±0.50	3.80 max	3.50	1.70	1.50
GCCM9070N	9.00±0.50	7.00±0.50	4.80 max	5.70	1.70	2.00
GCCM1211N	12.50±0.50	10.80±0.50	6.40 max	7.00	2.50	2.50

### 特点 Features

- 符合RoHS标准
- RoHS Compliant
- 用于全自动装配的小型SMD型共模滤波器
- Miniature SMD type common mode filter for fully automated assembly
- 电磁干扰抑制
- EMI suppression

### 应用 Applications

- 个人电脑和外围设备用USB线
- USB line for personal computers and peripheral IEEE
- 个人计算机IEEE 1394线, DVC, 机顶盒
- IEEE1394 line for personal computers, DVC, STB
- LVDS, 液晶显示屏面板线, 图形卡等
- LVDS, panel line for liquid display panels, graph card, etc.

### 电感特性范围 Inductance and rated current ranges

GCCM4520N	180~980Ω	39~91mΩ	2.30~1.50A
GCCM7060N	70~3000Ω	5~75mΩ	15.0~0.90A
GCCM9070N	300~2700Ω	6~86mΩ	6.00~2.00A
GCCM1211N	230~2700Ω	2~26mΩ	10.0~2.00A

### 包装数量 Packaging Quantity

GCCM4520N	1000PCS/R
GCCM7060N	1500PCS/R
GCCM9070N	700PCS/R
GCCM1211N	500PCS/R

### ★ 产品可以按客户要求定制

Products can be customized according to customer requirements

本产品符合车载信赖性标准AEC-Q200

This product Complied with automotive reliability test standard AEC-Q200



# GCCM Series (Common)

## ELECTRICAL SPECIFICATION

GCCM4520N Series (Quantity: 500PCS)/GCCM4520N 系列 (数量: 500PCS)

Part Number	Z( $\Omega$ ) 100MHz/0.1V		DCR (m $\Omega$ ) max.	Rated Current (A)Max.	IR (M $\Omega$ )	Rated Voltage (V)MAX
	MIN	TYP				
GCCM4520N-231T01	180	230	39	2.30	10.0	50
GCCM4520N-301T01	100	300	45	3.00	10.0	50
GCCM4520N-701T01	500	700	59	2.20	10.0	50
GCCM4520N-901T01	630	900	68	2.10	10.0	50
GCCM4520N-102T01	800	1000	68	2.10	10.0	50
GCCM4520N-142T01	980	1400	91	1.50	10.0	50

GCCM7060N Series (Quantity: 1500PCS)/GCCM7060N 系列 (数量: 1500PCS)

Part Number	Z( $\Omega$ ) 100MHz/0.1V		DCR (m $\Omega$ ) max.	Rated Current (A)Max.	IR (M $\Omega$ )	Rated Voltage (V)MAX
	MIN	TYP				
GCCM7060N-400T01	40	70	5	15.0	10.0	125
GCCM7060N-101T01	100	140	10	9.00	10.0	125
GCCM7060N-301T01	225	300	10	5.00	10.0	125
GCCM7060N-501T01	275	350	10	5.00	10.0	125
GCCM7060N-601T01	500	700	15	4.00	10.0	125
GCCM7060N-701T01	500	700	15	4.00	10.0	125
GCCM7060N-102T01	800	1020	17	3.00	10.0	125
GCCM7060N-132T01	910	1300	21	2.50	10.0	125
GCCM7060N-272T01	2000	2700	63	1.00	10.0	125
GCCM7060N-302T01	2500	3000	75	0.90	10.0	125



# GCCM Series (Common)

## ELECTRICAL SPECIFICATION

GCCM9070N Series (Quantity: 700PCS)/GCCM9070N 系列 (数量: 700PCS)

Part Number	Z( $\Omega$ ) 100MHz/0.1V		DCR (m $\Omega$ ) max.	Rated Current (A)Max.	IR (M $\Omega$ )	Rated Voltage (V)MAX
	MIN	TYP				
GCCM9070N-301T01	225	300	6	6.00	10.0	50
GCCM9070N-501T01	450	600	8	5.50	10.0	50
GCCM9070N-701T01	500	700	10	5.00	10.0	50
GCCM9070N-102T01	750	1000	13	4.00	10.0	50
GCCM9070N-152T01	1300	1500	15	3.00	10.0	50
GCCM9070N-222T01	1700	2200	60	2.50	10.0	50
GCCM9070N-272T01	2000	2700	86	2.00	10.0	50

GCCM7060N Series (Quantity: 500PCS)/GCCM7060N 系列 (数量: 500PCS)

Part Number	Z( $\Omega$ ) 100MHz/0.1V		DCR (m $\Omega$ ) max.	Rated Current (A)Max.	IR (M $\Omega$ )	Rated Voltage (V)MAX
	MIN	TYP				
GCCM1211N-800T01	80	230	2.0	10.00	10.0	125
GCCM1211N-501T01	300	500	5.5	8.00	10.0	125
GCCM1211N-701T01	500	700	6.0	8.00	10.0	125
GCCM1211N-801T01	550	800	9.5	8.00	10.0	125
GCCM1211N-102T01	750	1000	14.0	6.00	10.0	125
GCCM1211N-222T01	1750	2200	20.5	2.00	10.0	125
GCCM1211N-272T01	2000	2700	26.0	2.00	10.0	125