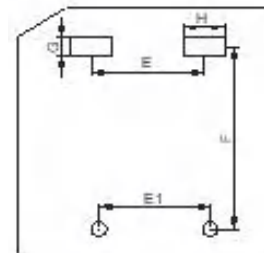
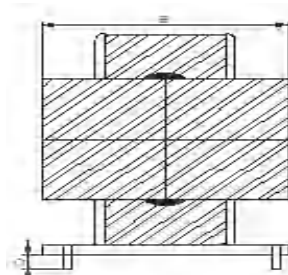
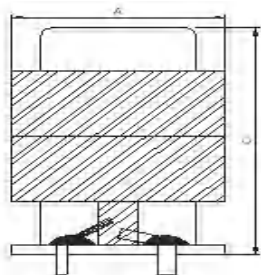


## EE系列新能源变压器 EE series New energy transformer

### 结构及外形尺寸 Dimensions of structure and shape



Part Number	A (mm)	B (mm)	C (mm)	E (mm)	F (mm)	D (mm)	G (mm)	Pins (Optional)
GBEE40	42 max	43 max	35 max	7.5±0.5	36.5±0.5	3.5±0.5	2.0 max	3+3
GBEE50	51 max	52 max	39 max	12.0±0.5	45.5±0.5	3.5±0.5	3.0 max	2+2
GBEE55	59 max	69 max	58 max	8.0±0.5	52.0±0.5	3.5±0.5	3.0 max	3+2
GBEE55	57 max	68 max	59 max	11.0±0.5	38.0±0.5	3.5±0.5	2.5 max	2+2
GBEE55	57 max	58 max	71 max	15.0±0.5	45.0±0.5	3.5±0.5	6.0*1.5 max	3+2
GBEE70	73 max	108 max	67 max	12.0±0.5	89.0±0.5	3.5±0.5	8.0*2.0 max	4+2
GBEE70	73 max	109 max	68 max	15.0±0.5	90.0±0.5	3.5±0.5	8.0*1.5 max	3+2

### 特性 Features

EE系列新能源变压器适用范围广，工作频率高，工作电压范围宽，输出功率大，热稳定性能高等特点

EE series new energy transformer has the characteristics of wide application range, high working frequency, wide working voltage range, large output power and high thermal stability

工作温度范围:-40~125°C

Operating temperature range:-40~125°C

### 应用 Applications

汽车充电桩

Automobile charging pile

服务器

server

储能电源

Energy storage power source

大功率UPS逆变器电源

Power supply for the high-power UPS inverter

★ 产品可以按客户要求定制

Products can be customized according to customer requirements